



CITROËN RELAY







READY FOR ANYTHING. WHATEVER YOU THROW AT IT OR LOAD INTO IT, THE CITROËN RELAY IS UP TO THE JOB... AND MORE.

OUR RICH HERITAGE IN DESIGNING AND BUILDING COMMERCIAL VEHICLES HAS BROUGHT US TO THE POINT WHERE OUR RELAY VAN HAS ALL THE ANSWERS. AND THE EXTENSIVE RANGE OF SIZE AND PAYLOAD OPTIONS MEANS THAT ALL BASES ARE COVERED. COMPLETELY.



> CONTENTS: 4 LOAD CHAMPION 6 READY FOR ANYTHING 8 ENTERPRISING SOLUTIONS 9 COLOUR, WHEELS & TRIM
10 RANGE OVERVIEW 12 OPTIONS 13 WEIGHTS & PAYLOADS 14 EQUIPMENT SPECIFICATION 16 DIMENSIONS
17 TECHNICAL SPECIFICATION 18 ENVIRONMENTAL COMMITMENT 19 FINANCE, CARE & INSURANCE



AN EXTENSIVE CHOICE. THE CITROËN RELAY OFFERS AN IMPRESSIVE RANGE OF EQUIPMENT IN OVER 25 CONFIGURATIONS.

THE CITROËN RELAY HAS A GROSS VEHICLE WEIGHT OF UP TO FOUR TONNES, WITH PAYLOADS OF ALMOST TWO TONNES. THE CITROËN RELAY IS AVAILABLE IN FOUR LENGTHS, THREE WHEELBASES AND THREE HEIGHTS, ENCOMPASSING USABLE LOAD SPACES FROM 8M³ TO 17M³.

It is available in Panel Van, Enterprise, Chassis Cab and Crew Cab variants. With such a diverse and comprehensive range, the Citroën Relay can be tailored to meet the needs of even the most specialist customer. Powering the Citroën Relay are four diesel engines: HDi 110 optimised for low emissions and low fuel consumption, HDi 130, HDi 150 and HDi 180, all with exceptional pulling power. All four have 6-speed manual gearboxes to deliver the impressive performance that is associated with Citroën diesel technology. The e-HDi 130 6-speed manual Stop & Start further improves Relay's economy and minimises its environmental impact, while maintaining its responsive performance.





> INTERIOR COMFORT

The Citroën Relay has been designed to be a true extension of the office: three generous seats (driver's seat with height and lumbar adjustment and dual passenger bench seat), a quiet, well-insulated cabin, and a dashboard with multiple storage areas and clever features. A document clipboard integrated into the top of the dashboard keeps paperwork tidy, while a panel integrated into the back of the front dual passenger seat unfolds to become a work surface. Once you've finished working, your laptop can be stowed safely in the central one of two lockable glove compartments, specially designed to accommodate a laptop computer.



> PNEUMATIC SUSPENSION FOR EASY LOADING

Optional rear pneumatic suspension gives even greater ride comfort. The load sill – already very low even with standard suspension – can be lowered by another 7cm, giving the Citroën Relay one of the lowest load heights in its class.



EVERYTHING. AND MORE. INCREDIBLY VERSATILE, SPACIOUS AND COMFORTABLE, THE CITROËN RELAY IS READY FOR ANY PROFESSIONAL CHALLENGE.

AVAILABLE WITH A HUGE VARIETY OF EQUIPMENT INCLUDING A FULL STEEL BULKHEAD AND REAR PARKING SENSORS, BOTH STANDARD ON ENTERPRISE MODELS AND OPTIONAL ON PANEL VANS. THE CITROËN RELAY HARNESSES CITROËN INNOVATIONS, INTELLIGENT DESIGN, DURABLE ENGINEERING AND THOUGHTFUL DETAILS TO CREATE THE COMPLETE WORKING PARTNER.



› SECURITY

Trafficmaster Smartnav on Panel Vans and Enterprise models guides you to your destination via a colour touchscreen displaying the route ahead. GPS Stolen Vehicle Tracking means that once you have arrived you can park and leave your vehicle in complete peace of mind. Includes 3 years' Smartnav Touchscreen routes, up to 100 routes per month, 3 years' Stolen Vehicle Tracking, 3 years' automatically downloaded live traffic information, 10 Personal Assistant Smartnav routes and 3 months' Safe Speed safety camera alerts.



› IN CONTROL

The Connecting Box (Bluetooth® system with USB socket) allows you to make safe and efficient hands-free calls, whilst air conditioning keeps you cool in all situations. Both are standard on Enterprise and optional on all other models individually or on panel vans as part of the Enterprise Pack.



COLOURS, WHEELS & TRIM

BODY COLOURS



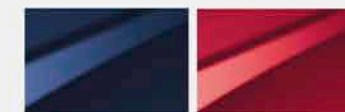
Polar White

Pacific Blue



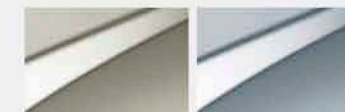
Tiziano Red

Carioca Yellow



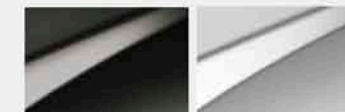
Imperial Blue

Deep Red (P)



Golden White (M)

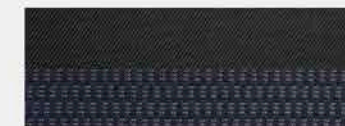
Lake Blue (M)



Graphito Grey (M)

Arctic Steel (M)

TRIM



Panel Van, Enterprise, Chassis Cab, Chassis Crew Cab and Back To Back Cab

Blue 'Tedeo' cloth

WHEELS

15" STEEL WHEELS
Set of four
Tyres: 215/70 R15 C¹



30, 33 Panel Vans
& 35 Chassis Cabs

15" STEEL WHEELS
Set of four
Tyres: 225/70 R15 C



35 Panel Vans

16" STEEL WHEELS
Set of four
Tyres: 225/75 R16 C



35 Heavy & 40 Heavy
Panel Vans & Chassis Cabs

(P) Pearlescent

(M) Metallic

¹ 225/70 R15 C if pneumatic rear suspension specified.

Please note: Colours and pictures shown are for illustration purposes only. Please consult your Dealer for definitive colour and trim/upholstery details.

READY FOR ANYTHING. WHATEVER
FORMAT AND EQUIPMENT LEVEL
YOUR WORK DEMANDS, THE CITROËN
RELAY RANGE WILL DELIVER A TOUGH
PROFESSIONAL PARTNER.

EVERY MODEL IN THE CITROËN RELAY RANGE HAS A SUPERB SPECIFICATION, UNMISTAKABLE INTERIOR COMFORT
AND HUGE LOAD VOLUMES AND PAYLOADS. IT'S TIME TO CHOOSE THE PERFECT FIT FOR YOUR BUSINESS...



➤ CITROËN RELAY **PANEL VAN** SPECIFICATION INCLUDES:

- ABS with Emergency Braking Assistance (EBA)
- Driver's airbag
- Variable power assisted steering (not variable on HDi 110 models)
- RDS stereo radio/MP3 compatible CD player with steering mounted controls
- Remote control central locking with deadlocks
- Front electric windows with 'one-touch' operation and anti-pinch
- Heated door mirrors with electric adjustment on passenger side
- 12 volt sockets on centre console and in load compartment
- Multi-function on-board trip computer
- Overhead storage shelf
- Height adjustable steering wheel
- Height adjustable driver's seat with lumbar adjustment and armrest
- Dual front passenger bench seat
- Four-passenger rear bench seat (Chassis Crew Cab only)
- Ladder frame bulkhead (excludes Chassis, Chassis Crew and Back to Back Cabs)
- Nearside unglazed sliding side loading door (excludes Chassis, Chassis Crew and Back to Back Cabs)
- Twin unglazed rear doors (excludes Chassis, Chassis Crew and Back to Back Cabs)
- Fully enclosed cab with fixed inset rear window (Chassis, Chassis Crew and Back to Back Cabs only)
- **Smartnav** – 3 years' Smartnav Touchscreen routes, up to 100 routes per month, 3 years' Stolen Vehicle Tracking, 3 years' automatically downloaded live traffic information, 10 Personal Assistant Smartnav routes and 3 months' Safe Speed safety camera alerts (excludes Chassis, Chassis Crew and Back to Back Cabs)

➤ CITROËN RELAY **ENTERPRISE PANEL VAN** SPECIFICATION IN ADDITION TO PANEL VAN INCLUDES:

- **Connecting Box** – Bluetooth® system with USB socket
- Air conditioning
- Rear parking sensors
- Full steel bulkhead

	PANEL VAN	ENTERPRISE	CHASSIS CAB	CHASSIS CREW CAB	BACK TO BACK	TIPPER ^{1/2}	DROPSIDE ^{2/3}	LUTON ^{3/4}
ENGINE AVAILABILITY								
30 L1H1 HDi 110 6-speed manual	•	•						
30 L1H1 eHDi 130 6-speed Stop & Start manual	•							
33 L1H1 HDi 110 6-speed manual	•							
33 L1H1 HDi 130 6-speed manual	•							
33 L2H2 HDi 110 6-speed manual	•							
33 L2H2 HDi 130 6-speed manual	•							
33 L3H2 HDi 130 6-speed manual	•							
35 HDi 130 6-speed manual					•			
35 L2 HDi 110 6-speed manual			•					
35 L2 HDi 130 6-speed manual			•			•		
35 L2H1 HDi 130 6-speed manual	•							
35 L2H2 HDi 130 6-speed manual	•							
35 L3 HDi 130 6-speed manual			•	•			•	•

	PANEL VAN	ENTERPRISE	CHASSIS CAB	CHASSIS CREW CAB	BACK TO BACK	TIPPER ^{1/2}	DROPSIDE ^{2/3}	LUTON ^{3/4}
ENGINE AVAILABILITY								
35 L3H2 HDi 130 6-speed manual	•	•						
35 L3H2 HDi 150 6-speed manual	•							
35 L3H3 HDi 130 6-speed manual	•							
35 Heavy L3 HDi 150 6-speed manual			•					
35 Heavy L3H2 HDi 130 6-speed manual	•							
35 L3H2 eHDi 130 6-speed Stop & Start manual	•							
35 Heavy L4 HDi 150 6-speed manual			•					•
35 Heavy L4H2 HDi 130 6-speed manual	•							
40 Heavy L4H2 HDi 130 6-speed manual	• ⁵							
35 Heavy L4H3 HDi 130 6-speed manual	•							
40 Heavy L2H2 HDi 130 6-speed manual	•							
40 Heavy L4H3 HDi 180 6-speed manual	• ⁶							

1 Specialist Tipper: Relay chassis cab with Tipmaster tipper body
 2 No factory options, colours (white only) or bespoke conversion requirements are available on Specialist Models.
 3 Specialist Dropside: Relay chassis cab with Ingimex dropside body

4 Specialist Luton: Relay chassis cab with Buckstone Motor Bodies Luton body
 5 Minibus conversions only.
 6 Ambulance conversions only

CITROËN RELAY IS ALSO AVAILABLE AS A CHASSIS CAB, CHASSIS CREW CAB OR A BACK TO BACK MODEL DESIGNED TO BE ADAPTABLE FOR MANY DIFFERENT KINDS OF SPECIALIST CONVERSION. TO EXTEND THE CITROËN RELAY RANGE FURTHER OUR SPECIALIST MODELS INCLUDE A STANDARD TIPPER, DROPSIDE OR A LUTON VAN. BUILT TO THE SAME HIGH STANDARD AS ANY OF OUR PANEL VANS, THESE MODELS OFFER NEAR ENDLESS POSSIBILITIES TO HELP YOU FIND YOUR FIT-FOR-PURPOSE, PERFECT MODEL.



OPTIONS

- Standard equipment
- ◆ No cost option
- Optional factory fitted equipment

- 1 Mobile phone compatibility can vary by phone manufacturer. Please consult your Dealer for further phone compatibility information.
- 2 Excludes 30 L1H1 HDi 110 6-speed manual and 35 L3H2 HDi 130 6-speed manual models.
- 3 Excludes Stop & Start models.
- 4 Rear adjustable pneumatic suspension includes Electronic Stability Programme (ESP) on 40 Heavy models.
- 5 Excludes 40 Heavy models.
- 6 40 Heavy models may only be fitted with 62mph speed limiter if they are to be converted to a minibus.
- 7 Excludes Chassis Crew Cab.
- 8 Standard on 40 Heavy, optional on all other models.
- 9 Located in overhead storage shelf.
- 10 The operator of the vehicle must have the tachograph calibrated and sealed by an Approved Tachograph Centre and then checked every two years.
- 11 Tachograph is not compatible with Bluetooth® system and replaces radio/CD player.
- 12 Suitable for conversions up to 2.35m total width.
- 13 40 Heavy L4H3 HDi 180 6-speed manual model only.
- 14 Excludes 40 Heavy L4H3 HDi 180 6-speed manual model.
- 15 Rear adjustable pneumatic suspension replaces rear reinforced twin-leaf suspension when ordered on 40 Heavy models.
- 16 Rear adjustable pneumatic suspension is not compatible with rear reinforced twin-leaf suspension.
- 17 Includes 225/70 tyres on 30 and 33 Panel Vans and 35 Chassis Cabs.
- 18 Standard on Dropside Specialist models, optional on Chassis and Crew Cabs.
- 19 Standard on Tipper and Luton Specialist models, optional on Chassis and Crew Cabs.
- 20 Excludes H3 models.

	PANEL VAN	ENTERPRISE	CHASSIS/CREW CAB	BACK TO BACK CAB
OPTION SUMMARY				
Individual passenger seat	◆	◆	◆	◆
Connecting Box – Bluetooth® system with USB socket	○ ¹	● ¹	○ ¹	○ ¹
Rear parking sensors	○	●		
Enterprise Pack – Connecting Box, air conditioning with air conditioned glove box, rear parking sensors and full steel bulkhead	○ ^{1/2/3}	● ¹		
Integrated radio aerial in door mirror			○	○
Air conditioning and air conditioned glove box		●	○	○
Air conditioning, air conditioned glove box and full steel bulkhead	○	●		
Air conditioning, air conditioned glove box and full steel bulkhead with inset window	○			
Full steel bulkhead	○	●		
Full steel bulkhead with inset sliding window	○			
Converter socket	○	○	●	●
Electronic Stability Programme (ESP) with traction control and Hill Start Assist function	○ ⁴	○	○	
Front passengers' airbag	○	○	○	○
Cruise control	○ ⁵	○	○	○
Cruise control with speed limiter fixed at 56mph	○	○	○	○
Cruise control with speed limiter fixed at 62mph	○ ⁶	○	○ ⁷	○

	PANEL VAN	ENTERPRISE	CHASSIS/CREW CAB	BACK TO BACK CAB
OPTION SUMMARY				
Speed limiter fixed at 56mph	● ⁸	○	○	○
Speed limiter fixed at 62mph	○ ⁶	○	○ ⁷	○
Anti-theft alarm with anti-lift alarm	○	○	○	○
Tachograph	● ^{8/9/10}	○ ^{9/10}	○ ^{9/10}	○ ^{9/10/11}
Electrically folding twin lens door mirrors	○	○		
Extended twin lens door mirrors			○ ¹²	○ ¹²
Front fog lights	○	○	○	○
Reinforced alternator	○ ¹³			
Reinforced battery	○ ¹⁴	○	○	○
Rear adjustable pneumatic suspension	○ ^{4/15/16/17}	○ ^{16/17}	○ ^{16/17}	
Rear reinforced twin-leaf suspension	● ^{8/15/16}	○ ¹⁶	○ ^{16/18}	
Rear heavy duty reinforced twin-leaf suspension			○ ^{16/19}	
Glazed rear doors with heated windows	○			
Unglazed offside sliding side loading door	○ ²⁰	○		
Rear doors opening to 260°	○	○		
125 litre fuel tank	○	○	○	○
Metallic/Pearlescent paint	○	○	○	○
Special order paint	○	○	○	○



WEIGHTS & PAYLOADS

	GVW	KERB WEIGHT	PAYLOAD*	MAX PERMITTED WEIGHT ON FRONT AXLE**	MAX PERMITTED WEIGHT ON REAR AXLE**	MAX TRAILER***	GTW	MAXIMUM ROOF LOAD
PANEL VAN								
30 L1H1 HDi 110 6-speed manual	3000	1845	1155	1630	1650	2000	5000	150
30 L1H1 eHDi 130 6-speed Stop & Start manual	3000	1860	1140	1630	1650	2500	5500	150
33 L1H1 HDi 110 6-speed manual	3300	1845	1455	1750	1900	2000	5300	150
33 L1H1 HDi 130 6-speed manual	3300	1860	1440	1750	1900	2500	5800	150
35 L2H1 HDi 130 6-speed manual	3500	1900	1600	1850	2000	2500	6000	150
33 L2H2 HDi 110 6-speed manual	3300	1910	1390	1750	1900	2000	5300	150
33 L2H2 HDi 130 6-speed manual	3300	1925	1375	1750	1900	2500	5800	150
35 L2H2 HDi 130 6-speed manual	3500	1925	1575	1850	2000	2500	6000	150
40 Heavy L2H2 HDi 130 6-speed manual	4005	2010	1995	2100	2400	2500	6505	150
33 L3H2 HDi 130 6-speed manual	3300	1975	1325	1750	1900	2500	5800	150
35 L3H2 HDi 130 6-speed manual	3500	1975	1525	1850	2000	2500	6000	150
35 L3H2 eHDi 130 6-speed Stop & Start manual	3500	1975	1525	1850	2000	2500	6000	150
35 L3H2 HDi 150 6-speed manual	3500	1975	1525	1850	2000	2500	6000	150
35 Heavy L3H2 HDi 130 6-speed manual	3500	2015	1485	2100	2400	3000	6500	150
35 L3H3 HDi 130 6-speed manual	3500	2000	1500	1850	2000	2500	6000	150
35 Heavy L4H2 HDi 130 6-speed manual	3500	2060	1440	2100	2400	3000	6500	150
40 Heavy L4H2 HDi 130 6-speed manual	4005	2105	1900	2100	2400	2500	6505	150
35 Heavy L4H3 HDi 130 6-speed manual	3500	2090	1410	2100	2400	3000	6500	150
40 Heavy L4H3 HDi 180 6-speed manual	4005	2185	1820	2100	2400	2500	6505	150
ENTERPRISE								
30 L1H1 HDi 110 6-speed manual	3000	1845	1155	1630	1650	2000	5000	150
35 L3H2 HDi 130 6-speed manual	3500	1975	1525	1850	2000	2500	6000	150

	GVW	KERB WEIGHT	PAYLOAD*	MAX PERMITTED WEIGHT ON FRONT AXLE**	MAX PERMITTED WEIGHT ON REAR AXLE**	MAX TRAILER***	GTW	MAXIMUM ROOF LOAD
CHASSIS CAB								
35 L2 HDi 110 6-speed manual	3500	1620	1880 [^]	1850	2000	2000	5500	
35 L2 HDi 130 6-speed manual	3500	1635	1865 [^]	1850	2000	2500	6000	
35 L3 HDi 130 6-speed manual	3500	1655	1845 [^]	1850	2000	2500	6000	
35 Heavy L3 HDi 150 6-speed manual	3500	1695	1805 [^]	2100	2400	3000	6500	
35 Heavy L4 HDi 150 6-speed manual	3500	1710	1790 [^]	2100	2400	3000	6500	
CHASSIS CREW CAB								
35 L3 HDi 130 6-speed manual	3500	1840	1660 [^]	1850	2000	2500	6000	
BACK TO BACK CAB								
35 HDi 130 6-speed manual	3500							
SPECIALIST VEHICLES								
35 L2 HDi 130 6-speed manual Tipper	3500	2265	1235	1850	2000			
35 L3 HDi 130 6-speed manual Dropside	3500	1988	1512	1850	2000			
35 L3 HDi 130 6-speed manual Luton	3500	2420	1080	1850	2000			
35 Heavy L4 HDi 150 6-speed manual Luton	3500	2585	915	2100	2400			



Up to 1995kg
payload on Panel Vans

* Includes driver. Final payload of Chassis Cab and Chassis Crew Cab depends upon the specific conversion built on the vehicle.

** Maximum weight which can be placed on axle.

*** Trailer weight must be reduced if vehicle is running at GVW to ensure that GTW is not exceeded.

[^] Maximum allowable payload. Exact value varies depending on specification of completed vehicle.

EQUIPMENT SPECIFICATION

- Standard equipment
- Optional factory fitted equipment

¹ Excludes central row 2 seats on Chassis Crew Cab models.

² Standard on 40 Heavy, optional on all other models.

³ Standard on 40 Heavy L4H2 model for minibus conversions.

⁴ Not available on Crew Cabs.

⁵ Suitable for conversions up to 2.20m total width.

⁶ Specialist models only.

⁷ Supplied together with full steel bulkhead

⁸ Standard on Dropside Specialist models, optional on Chassis and Crew Cabs.

⁹ Standard on Specialist Tipper and Luton models, optional on Chassis and Crew Cabs.

¹⁰ Chassis Crew Cab only.

¹¹ When passenger airbag is specified, it is not possible to raise the clipboard to its inclined position.

¹² 12 anchorage points.

¹³ L1 and L2 models have 3 anchorage points each side and L3 and L4 models have 4 anchorage points each side.

¹⁴ Located in overhead storage shelf.

¹⁵ The operator of the vehicle must have the tachograph calibrated and sealed by an Approved Tachograph Centre and then checked every two years.

¹⁶ Mobile phone compatibility can vary by phone manufacturer. Please consult your Dealer for further compatibility information.

	PANEL VAN	ENTERPRISE	CHASSIS/CREW CAB	BACK TO BACK CAB
SAFETY & SECURITY				
ABS with Emergency Braking Assistance (EBA)	●	●	●	●
Driver's airbag	●	●	●	●
Transponder immobiliser	●	●	●	●
Three-point inertia reel seat belts on all seats	●	●	● ¹	●
Front seat belt pre-tensioners with force-limiters on driver's seat and outer passenger bench seat	●	●	●	●
High-frequency remote control central locking with deadlocks	●	●	●	●
Central locking button on centre console	●	●	●	●
Warning light for driver's 'unfastened' seat belt	●	●	●	●
Automatic door locking (when vehicle is in motion)	●	●	●	●
Rear fog lights with twin reversing lights	●	●	●	●
Speed limiter fixed at 56mph	● ²	○	○	○
Speed limiter fixed at 62mph	● ³	○	○ ⁴	○
Interior load space protection	●	●	●	●
Ladder frame bulkhead	●	●	●	●
Full steel bulkhead	○	●	●	●
Moulded rear door panel protection	●	●	●	●
Fully enclosed cab with fixed inset rear window	●	●	●	●
LIGHTING & VISIBILITY				
Heated door mirrors with electric adjustment on passenger side	●	●	●	●
Height-adjustable headlamps	●	●	●	●
'Guide-me-home' headlamp function	●	●	●	●
Automatic illumination of cabin lighting set via ceiling mounted button	●	●	●	●
Courtesy reading light	●	●	●	●
Rear view mirror	●	●	●	●
Load compartment light	●	●	●	●
Extended twin lens door mirrors	●	●	● ⁵	● ⁵
STYLE				
Tinted windows	●	●	●	●
Side rubbing strips	●	●	●	●
Unglazed rear doors	●	●	●	●
Unglazed nearside single sliding side loading door	●	●	●	●
Front mudflaps	●	●	● ⁶	●

	PANEL VAN	ENTERPRISE	CHASSIS/CREW CAB	BACK TO BACK CAB
COMFORT & CONVENIENCE				
Front electric windows with one-touch operation	●	●	●	●
Height-adjustable steering wheel	●	●	●	●
Roof mounted passenger grab handle	●	●	●	●
Driver's and passengers' sunvisor	●	●	●	●
Cigar lighter	●	●	●	●
12 volt socket on centre console	●	●	●	●
12 volt socket in load compartment	●	●	●	●
Full width rear step	●	●	●	●
Rear parking sensors	○	●	○	○
Air conditioning and air conditioned glove box	○ ⁷	●	○	○
Rear reinforced twin-leaf suspension	● ²	○	● ⁸	○
Rear heavy duty reinforced twin-leaf suspension	○	○	● ⁹	○
Converter socket	○	○	●	●
DRIVER INFORMATION				
Multi-function on-board trip computer	●	●	●	●
Lockable fuel cap	●	●	●	●
Fuel gauge and low fuel warning light	●	●	●	●
Handbrake warning light	●	●	●	●
Hazard warning light	●	●	●	●
Indicator warning light	●	●	●	●
Low battery charge warning light	●	●	●	●
Brake fluid warning light	●	●	●	●
Oil pressure indicator	●	●	●	●
Rev counter	●	●	●	●
Side headlamps and main beam warning light	●	●	●	●
Trip and total mileage recorders	●	●	●	●
Coolant indicator	●	●	●	●
Programmable overspeed warning	●	●	●	●
Pre-heat warning light	●	●	●	●
Rear fog lamp warning light	●	●	●	●

	PANEL VAN	ENTERPRISE	CHASSIS/CREW CAB	BACK TO BACK CAB
SEATING				
Height-adjustable front head restraints	•	•	•	•
Height-adjustable driver's seat with lumbar adjustment and armrest	•	•	•	•
Dual front passenger bench seat	•	•	•	•
Four-passenger rear bench seat with 3-point seat belts on outer seats and 2-point seat belts on two central places			• ¹⁰	
STORAGE				
Cup holder in centre console	•	•	•	•
A5 size dashboard mounted clipboard	• ¹¹	• ¹¹	• ¹¹	• ¹¹
Lidded glove box	•	•	•	•
Lockable central glove box	•	•	•	•
Overhead storage shelf	•	•	•	•
Storage pockets in top of dashboard	•	•	•	•
9 litre door pockets on driver's and passengers' side	•	•	•	•
Storage drawer under passengers' seat	•	•	•	•
Floor mounted anchorage points	• ¹²	• ¹²		
Anchorage points on each side of the roof	• ¹³	• ¹³		

	PANEL VAN	ENTERPRISE	CHASSIS/CREW CAB	BACK TO BACK CAB
AUDIO/NAVIGATION				
RDS stereo radio/MP3 compatible CD player with steering mounted controls	•	•	•	•
Smartnav – 3 years' Smartnav Touchscreen routes, up to 100 routes per month, 3 years' Stolen Vehicle Tracking, 3 years' automatically downloaded live traffic information, 10 Personal Assistant Smartnav routes and 3 months' Safe Speed safety camera alerts	•	•		
Tachograph	• ^{2/14/15}	○ ^{14/15}		
Connecting Box – Bluetooth® system with USB socket	○ ¹⁶	• ¹⁶	○ ¹⁶	○ ¹⁶



DIMENSIONS



Up to 17m³
of loadspace

	PANEL VANS								ENTERPRISE		CHASSIS CAB/ CREW CAB			BACK TO BACK CAB
	L1	L2		L3		L4		L1	L3	L2	L3	L4		
	H1	H1	H2	H2	H3	H2	H3	H1	H2					
EXTERIOR DIMENSIONS (mm)														
Length	4963	5413	5413	5998	5998	6363	6363	4963	5998	5258	5843	6208		
Length of frame to back of Chassis Cab										2920	3505	3870		
Length of frame to back of Crew Cab											2634			
Height	2254	2254	2524	2524	2764	2524	2764	2254	2524					
Height of cab										2254	2254	2254	2254	
Width – excluding door mirrors	2050	2050	2050	2050	2050	2050	2050	2050	2050	2050	2050	2050	2050	
Width – with door mirrors unfolded	2508	2508	2508	2508	2508	2508	2508	2508	2508					
Width – with extra wide door mirrors unfolded (max. vehicle width 2200mm)										2690	2690	2690	2690	
Width – with extra wide door mirrors unfolded (max. vehicle width 2350mm)										2770	2770	2770	2770	
Wheelbase	3000	3450	3450	4035	4035	4035	4035	3000	4035	3450	4035	4035		
Front overhang	948	948	948	948	948	948	948	948	948	948	948	948	948	
Rear overhang	1015	1015	1015	1015	1015	1380	1380	1015	1015	860	860	1225		
Front track	1810	1810	1810	1810	1810	1810	1810	1810	1810	1810	1810	1810	1810	
Rear track	1790	1790	1790	1790	1790	1790	1790	1790	1790	1790	1790	1790		
LOAD COMPARTMENT DIMENSIONS														
Load sill height – according to vehicle length and tyre size (mm)	506-509	503-506	493-559	503-557	505-555	594-602	555-563	509	504					
Load length (mm)	2670	3120	3120	3705	3705	4070	4070	2670	3705					
Maximum load compartment height (mm)	1662	1662	1932	1932	2172	1932	2172	1662	1932					
Maximum load width between sides (mm)	1870	1870	1870	1870	1870	1870	1870	1870	1870					
Maximum load width between wheel arches (mm)	1422	1422	1422	1422	1422	1422	1422	1422	1422					
Sliding side door height (mm)	1485	1485	1755	1755	1755	1755	1755	1485	1755					
Sliding side door width (mm)	1075	1250	1250	1250	1250	1250	1250	1075	1250					
Rear door height (mm)	1520	1520	1790	1790	2030	1790	2030	1520	1790					
Rear door width (mm)	1562	1562	1562	1562	1562	1562	1562	1562	1562					
Degree to which doors open	180	180	180	180	180	180	180	180	180					
Load compartment volume (m ³)	8	10	11.5	13	15	15	17	8	13					
CONVERTIBLE AREA DIMENSIONS (mm)														
Maximum length once converted [^]										7383	7383	7383		
Maximum overhang once converted (excl. Motorhomes) [^]										2070	2400	2400		
Maximum overhang once converted (Motorhomes only) [^]										2243	2400	2400		
Maximum height once converted [^]										2254/ 3500 [*]	3500	3500	3500	
Maximum width of conversion (excl. Motorhomes) [^]										2200 (2350) [*]	2200 (2350) [*]	2200 (2350) [*]	2200 (2350) [*]	
Maximum width of conversion (Motorhomes only) [^]										2430	2430	2430	2430	
Maximum interior width between wheel arches [^]	1422	1422	1422	1422	1422	1422	1422	1422	1422					

[^] Maximum allowable measurement after conversion. Exact value varies depending on specification of completed vehicle.

^{*} 2254 with HDi 110 engine; 3500 with HDi 130 engine.

^{*} 2200 with extra wide door mirrors (fitted as standard); 2350 with optional, wider door mirrors.

TECHNICAL SPECIFICATION

	DIESEL MODELS				
	HDi 110 6-speed manual	HDi 130 6-speed manual	e-HDi 130 6-speed Stop & Start manual	HDi 150 6-speed manual	HDi 180 6-speed manual
ENGINE					
Capacity (cc)	2198	2198	2198	2198	2999
Cylinders	4 in line	4 in line	4 in line	4 in line	4 in line
Bore and stroke (mm)	86.0 x 94.0	86.0 x 94.0	86.0 x 94.0	86.0 x 94.0	95.8 x 104.0
Max power CEE (kW/rpm)	81/3500	96/3500	96/3500	110/3500	130/3500
Max torque CEE (Nm/rpm)	250/1750	320/2000	320/2000	350/2000	400/1400
Fuel system	High pressure direct diesel injection	High pressure direct diesel injection	High pressure direct diesel injection	High pressure direct diesel injection	High pressure direct diesel injection
Euro status	Euro 5	Euro 5	Euro 5	Euro 5	Euro 5
TRANSMISSION					
Six speed manual	•	•	•	•	•
ECONOMY Litres/100km (mpg)					
Combined Min/Max	7.5/7.7 (37.7/36.7)	7.4/8.7 (38.2/32.5)	7.2/8.5 (39.2/33.2)	8.7 (32.5)	N/A*
CO₂ EMISSIONS (g/km) Min/Max	199/203	195/229	189/224	229	N/A*
BRAKES	ABS with Emergency Braking Assistance (EBA)				
Front brakes/Rear brakes	Ventilated discs/discs				
STEERING	Power assisted steering	Variable power assisted steering	Variable power assisted steering	Variable power assisted steering	Variable power assisted steering
Number of turns lock to lock	3.87	3.87	3.87	3.87	3.87
Turning circle between kerbs (m) L1	10.76	10.76	10.76		
Turning circle between kerbs (m) L2	12.30	12.30			
Turning circle between kerbs (m) L3/L4		14.14	14.14	14.14	14.14
SUSPENSION	Independent MacPherson type struts with triangulated lower suspension arms, coil springs with integral telescopic hydraulic dampers				
Front suspension	Independent MacPherson type struts with triangulated lower suspension arms, coil springs with integral telescopic hydraulic dampers				
Rear suspension	Longitudinal leaf springs with inclined telescopic hydraulic dampers				
Pneumatic rear suspension	Pneumatic springs at a constant height; adjustable when vehicle is stationary				
FUEL TANK CAPACITY Litres (gallons)	90 (19.8)				

* Not measured for vehicles over 3.5 tonnes.

MPG figures are achieved under official EU test conditions, intended as a guide for comparative purposes only, and may not reflect actual on-the-road driving conditions.

GREEN EFFICIENCY. CITROËN HAS BEEN PIONEERING CLEANER, MORE FUEL-EFFICIENT MOTORING, SUCH AS THE COMMON RAIL HDi ENGINES NOW FITTED IN ALL NEW CITROËN DIESELS, LONG BEFORE ALL THE HYPE...

CITROËN HAS ALWAYS BEEN AT THE FOREFRONT OF GREENER TECHNOLOGY AND THE CITROËN RELAY MAINTAINS THAT TRADITION. IT'S WHY WE ARE FOUR TIME WINNERS OF THE GREEN FLEET LCV MANUFACTURER OF THE YEAR, INCLUDING THEIR MOST RECENT, 2013 AWARD. TODAY, WE HAVE ONE OF THE UK'S WIDEST RANGES OF LOW EMISSION VEHICLES. WE ALSO PRODUCE ONE OF THE UK'S MOST ECONOMICAL LIGHT COMMERCIAL VEHICLES, THE CITROËN NEMO VAN.

We've been equipping more of our vehicles with more environmentally friendly breakthroughs, such as Stop & Start. Stop & Start puts the engine into idle mode as you decelerate and stops altogether as you come to a halt. The moment you take your foot off the brake, it restarts silently and without vibration. The results are a dramatic reduction in both fuel consumption and CO₂ emissions, combined with responsive performance wherever you go.



GO LO CO₂ WITH B30
All Citroën HDi diesel vans run on 30% bio-diesel



Citroën is a leader in the manufacture of low CO₂ emissions vehicles

➤ AIRDREAM – A BENCHMARK

Citroën's environmental commitment and advanced efficiency are perfectly illustrated by Airdream. It's a benchmarking scheme that has three demanding criteria which a vehicle must achieve before it can wear the name. Firstly it must emit no more than 140g/km CO₂. Secondly it must be produced at a plant that meets the rigorous ISO 14001 certification and also it must be 95% recoverable. Only e-HDi, electric or Hybrid4 engined Citroëns currently qualify. It's no surprise that Citroën is one of the leaders in Europe for low CO₂ emissions.



➤ THE AWARD WINNING CITROËN VAN RANGE

Citroën has an impressive range of vans to offer, full of innovations and technologies that raise the bar for comfort, safety, hard working efficiency and style. Our four model van range goes from the fabulously compact Citroën Nemo to the hugely versatile Citroën Relay and includes a number of Specialist models. Whichever you go for you'll get plenty of ingenious storage and business focused equipment, all designed to make your work easier and extra efficient.

DRIVE YOUR WAY. GET BEHIND THE WHEEL OF YOUR NEW CITROËN RELAY, WITH CITROËN'S RANGE OF FINANCE AND INSURANCE PRODUCTS.

ESSENTIAL CARE. CITROËNS ARE RENOWNED FOR THEIR RELIABILITY – AND THE CITROËN RELAY IS NO EXCEPTION.

WITH THE ADDED REASSURANCE OF A WARRANTY, ROUTINE SERVICING AND MAINTENANCE, AS WELL AS 24-HOUR ROADSIDE ASSISTANCE, YOU ARE PROTECTED.

FOR BUSINESS USERS

CITROËN CONTRACT MOTORING

HIRE PURCHASE

A tried and tested finance package that allows you to own your vehicle.

BUSINESS LEASE

An alternative to vehicle ownership that allows you to control your business cash flow and gain tax efficiencies.

LEASE PURCHASE

Own a vehicle with a finance solution that offers ultimate flexibility to complement your business cash flow.

CONTRACT HIRE

A non-ownership finance solution that keeps costs fixed and risks low.

FOR MORE INFORMATION ON CITROËN FLEET AND BUSINESS SALES, PLEASE CALL CITROËN FLEET CONNECT ON 08457 940 940 OR LOOK US UP AT WWW.CITROEN.CO.UK/FLEET

CITROËN INSURANCE

INSTANT COVER

To help you drive away your new van without delay, we offer Instant Cover insurance, providing you with 7 days comprehensive insurance, for free!

MOTOR INSURANCE

Citroën Insurance has been designed specifically for our vehicles. You don't just get repairs you get Citroën expertise, service, quality and parts. So, when the time comes to renew your insurance cover, call Citroën Insurance on 0870 024 2725.

Lines open 8am - 8pm weekdays, 9am - 5pm Saturdays. Max call charge from a BT landline is 8p per minute. Calls from other networks may vary. Alternatively, visit www.citroen.co.uk for more information or to apply online.

Citroën Insurance is underwritten by UK Insurance Ltd which is authorised and regulated by the Financial Conduct Authority. Citroën Insurance is a trading style of Banque PSA Finance UK of Quadrant House, Princess Way, Redhill, Surrey, RH1 1QA.

CITROËN WARRANTY

Every new Citroën van has the benefit of a 3 year* warranty package, plus a 5 year anti-perforation** warranty and a 2 year paint warranty.

* 2 years' unlimited warranty. No-fee customer option of 1 year's Dealer provided warranty, only on vans sourced from Citroën UK Limited. Note: Dealer provided warranty is limited to 100,000 miles for vans.

** Against all internal to external perforation to bodywork or underbody.

CITROËN ASSISTANCE

In response to a free telephone call in the UK, Citroën Assistance brings rapid expert roadside assistance to you in an emergency. It comes free of charge for a full year and operates 24 hours a day in all parts of the UK and Europe. Services include nationwide recovery for both van and passengers, a home call service, replacement vehicle, hotel accommodation and vehicle storage if required. Please note, Citroën Assistance only applies to incidents covered by the new vehicle warranty, and excludes non-vehicle faults, such as running out of fuel, mis-fuelling, loss of keys, lock-ins, road traffic accidents and punctures/wheel changes.

Full details are available on request from Citroën UK via cuk_contactcentre@citroen.com

CITROËN MAINTENANCE

From roadside assistance to replacing wear and tear parts or regular servicing, with Citroën Maintenance you have total peace of mind. For a one-off fee or low monthly payment, our experienced engineers will take care of your Citroën, whatever happens.

To find out more, contact your Citroën Dealer or Citroën Authorised Repairer.

CITROËN SERVICING

Available up to 1 year from your vehicle's registration date, but before its first chargeable service, a Citroën Servicing Package enables you to pay in advance for your vehicle's servicing needs for 3 years/35,000 miles.

For further information, please contact your Citroën Dealer.



This brochure is made from paper from a well-managed forest. Citroën support responsible use of forest resources.

Please don't throw me away, give me to a friend or recycle me.

NOTE: Every endeavour has been made to ensure that the information and details contained in this brochure were accurate at the time of going to press January 2014. However the company reserves the right, whilst preserving the essential characteristics of the models described, to introduce at any time modifications, changes of details, equipment or accessories. Every effort will be made to bring this brochure up to date, but in order to avoid any misunderstandings please consult your Dealer. For full details of Citroën Care for Van and Driver, please see the full manufacturer's price list. The Citroën Website contains full information on all Citroën products and offers available in the UK, together with details of our environmental and recycling policies. The site address is: www.citroen.co.uk or you can contact Citroën directly via cuk_contactcentre@citroen.com

CITROËN prefers TOTAL

CITROËN UK Ltd. Pinley House, 2 Sunbeam Way, Coventry CV3 1ND.
www.citroen.co.uk

CRÉATIVE TECHNOLOGIE

